



INSTRUCTION BULLETIN

No. 9014040
Machine: 6100E
Published: 12-2015
Rev. 02

NOTE: DO NOT DISCARD the Parts List from the Instruction Bulletin. Place the Parts List in the appropriate place in the machine manual for future reference. Retaining the Parts List will make it easier to reorder individual parts and will save the cost of ordering an entire kit.

NOTE: Numbers in parenthesis () are reference numbers for parts listed in Bill of Materials.

Installation instructions for **kit number 9013990 / 9013993**

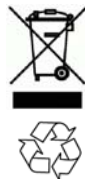
SYNOPSIS:

This kit contains the parts needed to install a telemetry kit on 6100E sweepers.
Please follow step-by-step instructions.

SPECIAL TOOLS / CONSIDERATIONS: NONE

(Estimated time to complete: 2 hours)

The IRIS (telemetry module) must be activated to complete this installation. The module will not function until it is activated. Call for assistance (North America - Technical Support / Australia - CCC) activating the module after all telemetry components have been installed. Have machine serial number and IRIS module SIM number (located on back of IRIS control box assembly) ready when calling for activation.



PROTECT THE ENVIRONMENT

Please dispose of packaging materials, used machine components such as batteries and fluids in an environmentally safe way according to local waste disposal regulations.

Always remember to recycle.

PREPARATION:

1. Confirm the hour meter is properly wired and functional. The hour meter must be fully functional and properly wired before the IRIS system can be installed.
2. Park the machine on a clean level surface, turn off the machine, and remove the key.

FOR SAFETY: Before leaving or servicing machine, stop on level surface, turn off machine, and remove key.

3. Lift the operator seat open and lock the seat into the open position.
4. Evaluate the condition of batteries, cables, and terminal connections. Batteries / cables / terminal connections must all be in safe working condition.
5. Disconnect the existing battery cable from the batteries. Set hardware aside. Discard the removed battery cable. (Fig. 1)

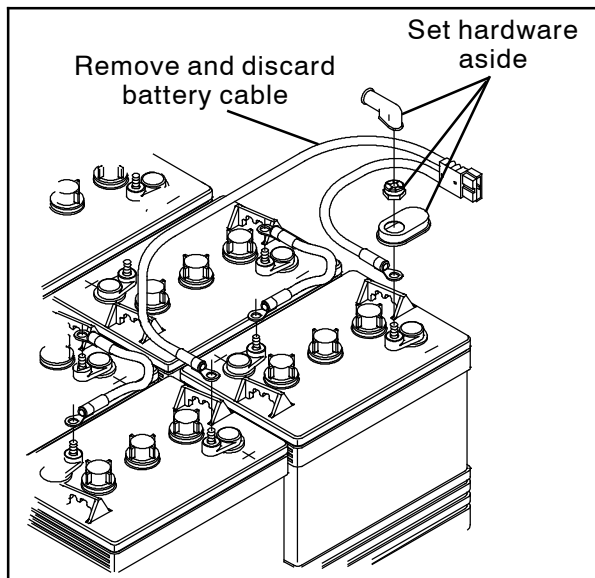


FIG. 1



WARNING: Always disconnect battery cables from machine before working on electrical components.

6. Remove the left shroud and right shroud from the machine. Set both shrouds aside.

INSTALLATION:

1. Remove the additional SIM label from the back of the control box (1) and set label aside in a safe place. The number on the SIM label will be needed for activating the machine. (Fig. 2)

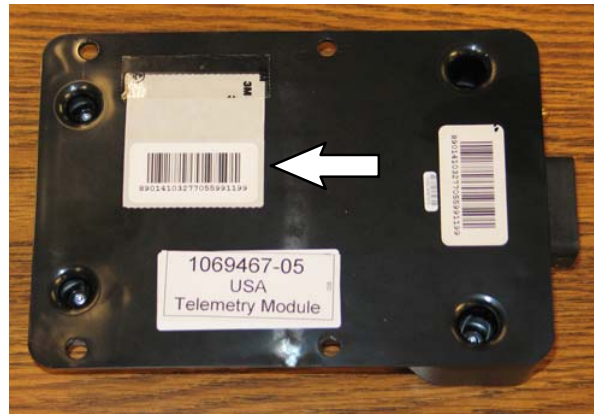


FIG. 2

2. If necessary, drill four four 0.236 in. (6 mm) holes for installing the control box (1) onto the seat support panel. (Fig. 20)
3. Use four M5 pan screws (3), eight flat washers (4), and four M5 hex nuts (5) to install the telemetry control box (1) onto the seat support panel. (Fig. 3)
4. Insert the rubber grommet (11) into the seat support panel. (Fig. 3)
5. Use two M5 pan screws (10), two flat washers (4), and two M5 hex nuts (5) to install the shunt (9) onto the vacuum fan box. (Fig. 3)
6. Remove the fuse from the telemetry harness (2). (Fig. 3)



FIG. 3

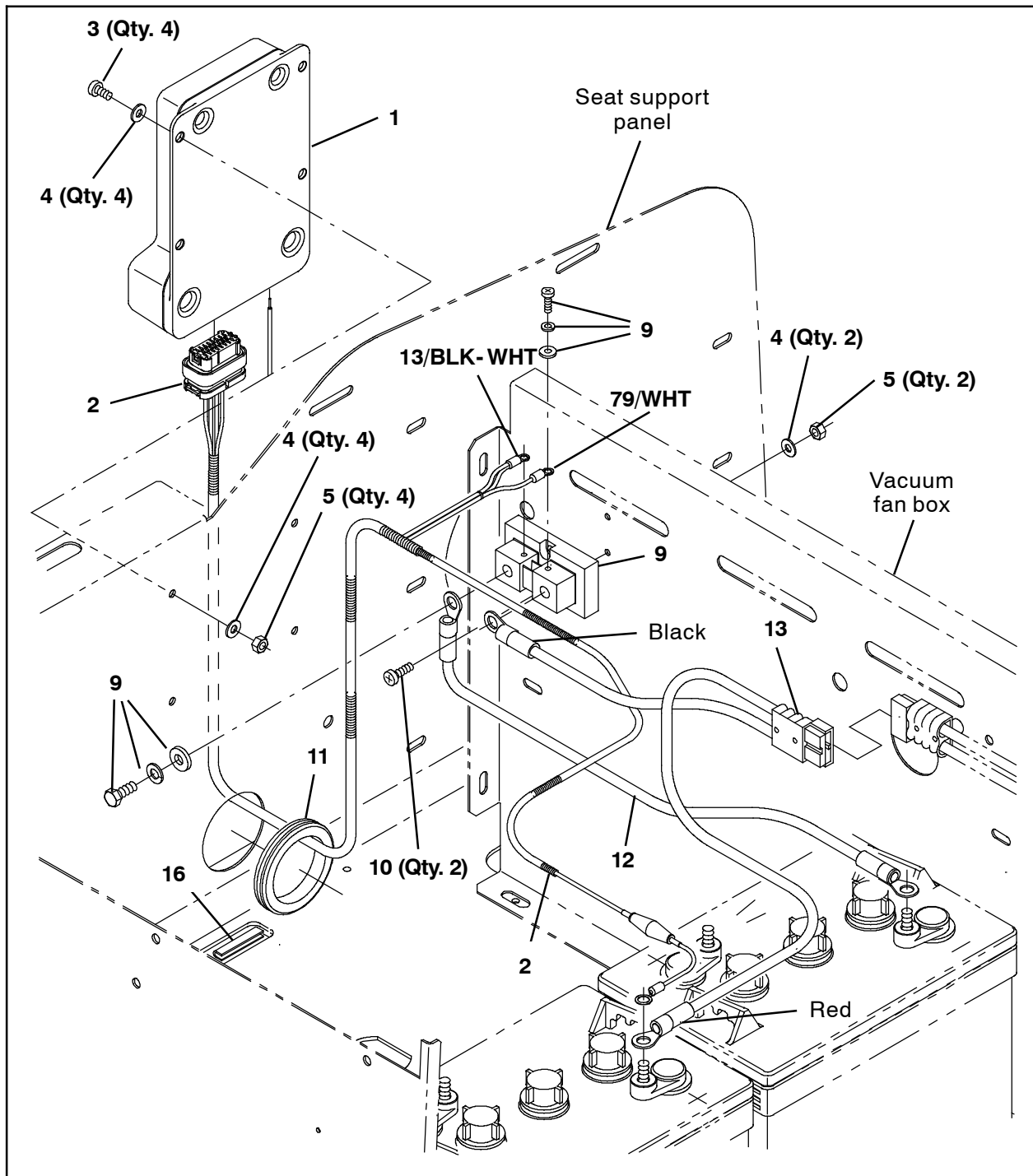


FIG. 4

7. Connect the telemetry harness (2) to the telemetry control box (1). (Fig. 4 / Fig. 5)
8. Route the telemetry harness (2) through the rubber grommet (11) in the seat support panel and into the battery compartment. (Fig. 4)
9. Connect the telemetry harness (2) 13/BLK-WHT wire to the shunt (9)- LOW SIDE. (Fig. 4 / Fig. 5)
10. Connect the telemetry harness (2) 79 WHT wire to the shunt (9)- HIGH SIDE. (Fig. 4 / Fig. 5)
11. Connect the battery cable (13) black cable to the side of the shunt (9) with 79/WHT wire. (Fig. 4 / Fig. 5)
12. Use saved hardware to connect the battery cable (13) red cable to the battery positive terminal. (Fig. 4 / Fig. 5)

13. Connect the telemetry harness (2) to the battery. (Fig. 4 / Fig. 5)
14. Use saved hardware to connect the black cable (12) to the battery. (Fig. 4)

15. Connect the other end of the black cable (12) to the side of the shunt (9) with the 13/BLK-WHT wire. (Fig. 4)

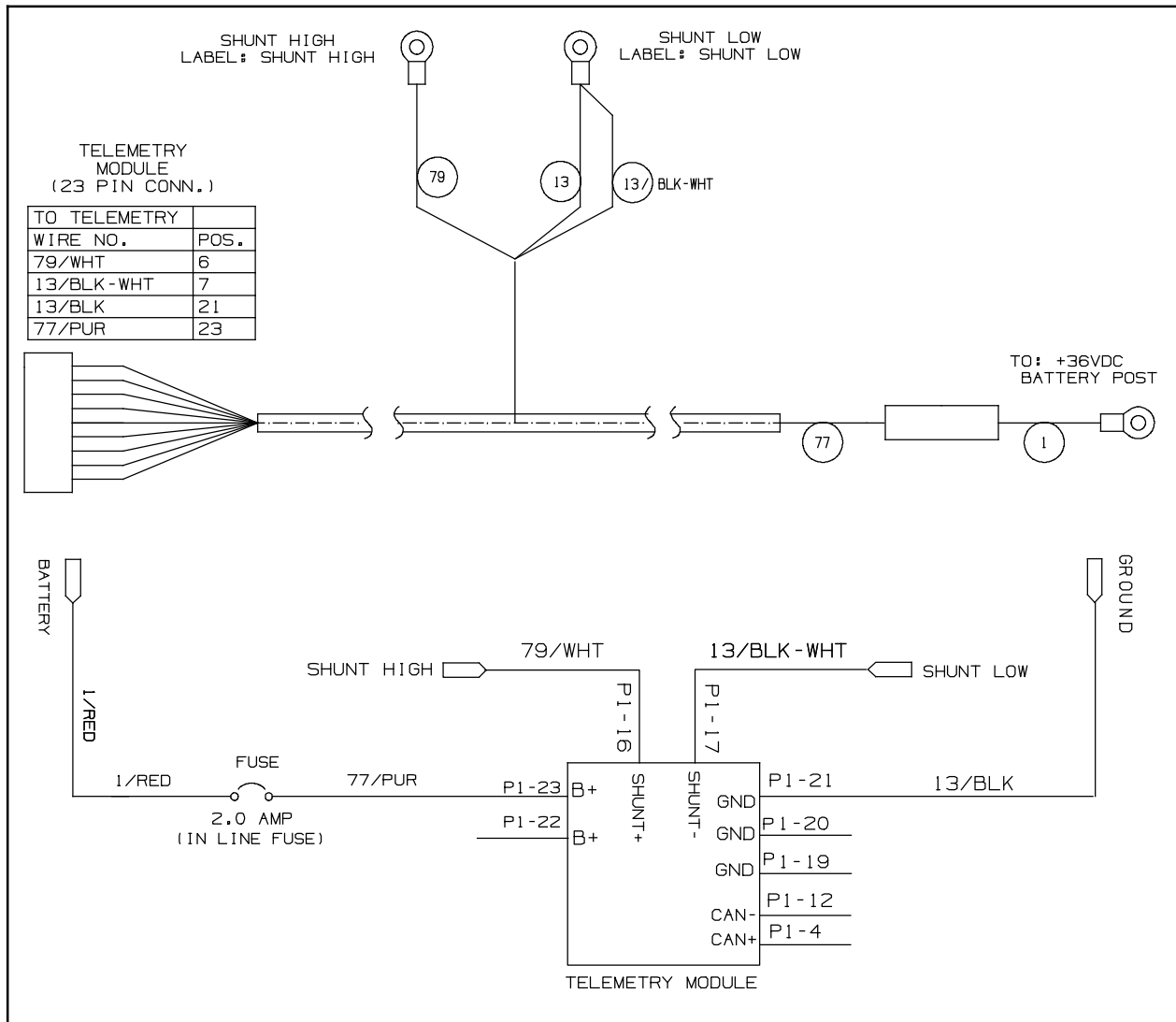


FIG. 5

16. Use two cable ties (18) to install the antenna (6) onto the antenna bracket (19). (Fig. 6)

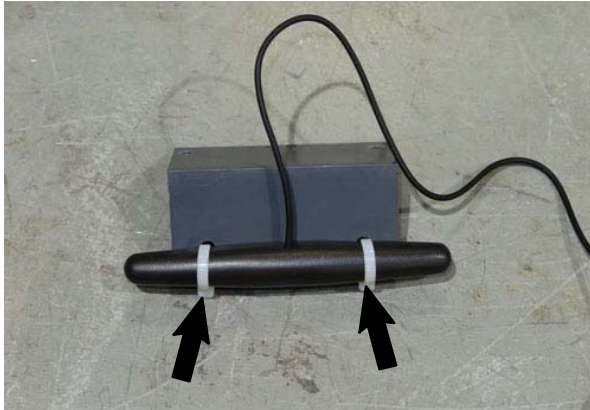


FIG. 6

17. Drill a 3/16 in. (4.76 mm) hole into the battery brace 2 in. (51 mm) from the edge of the battery brace closest to the front of the machine and 2 in. (51 mm) from the top edge of the battery brace. (Fig. 7 / Fig. 8)

NOTE: *Do Not* drill into the battery when drilling the holes through the battery brace.

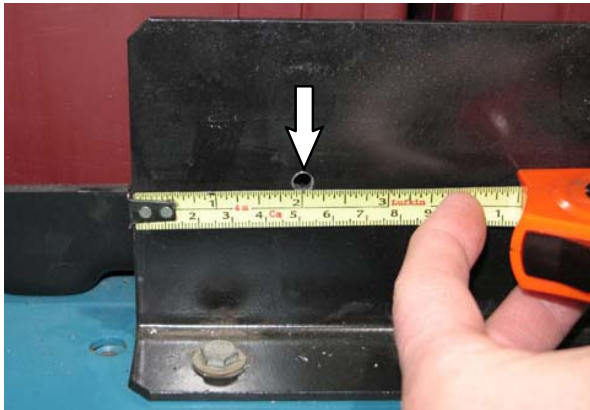


FIG. 7

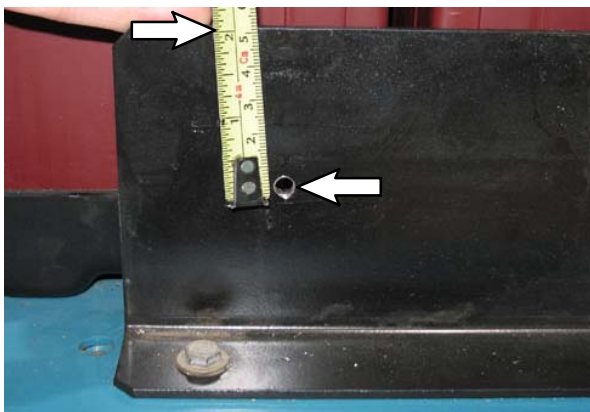


FIG. 8

18. Hold the antenna bracket (19) onto the battery brace and align the antenna bracket with the hole just previously drilled into the battery brace. Mark a location for the second hole.

19. Drill another 3/16 in (4.76 mm) hole into the battery brace to the right of the previously drilled hole. (Fig. 9)

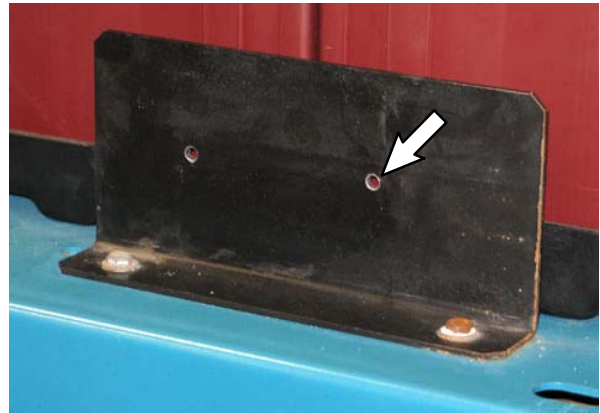


FIG. 9

20. Use two M5 hex screws (20), four washers (4), and two M5 hex nuts (5) to install the antenna (6) / antenna bracket (19) onto the battery brace. (Fig. 10 / Fig. 11)

NOTE: To avoid the battery being damaged if the battery were to slide against the battery brace, install the hex screws (20) as shown with the threaded end oriented out away from the battery.

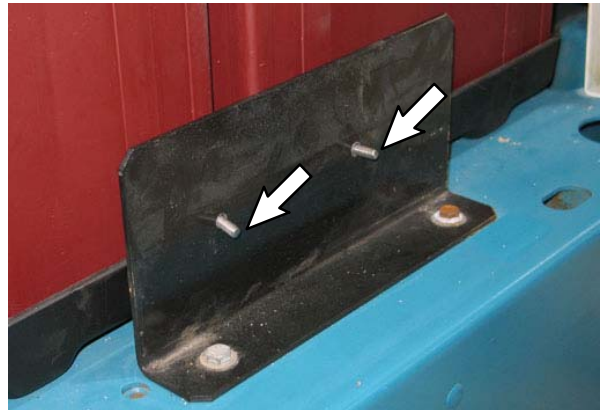


FIG. 10

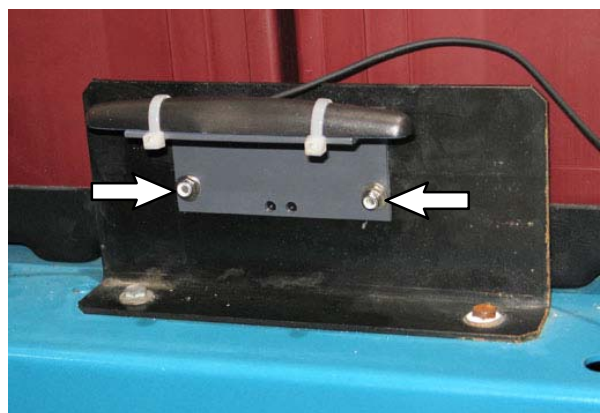


FIG. 11

21. Route the antenna (6) wire to the main wire harness, along the main wire harness, and to where the battery connector is located inside the battery compartment. (Fig. 12 / Fig. 13)

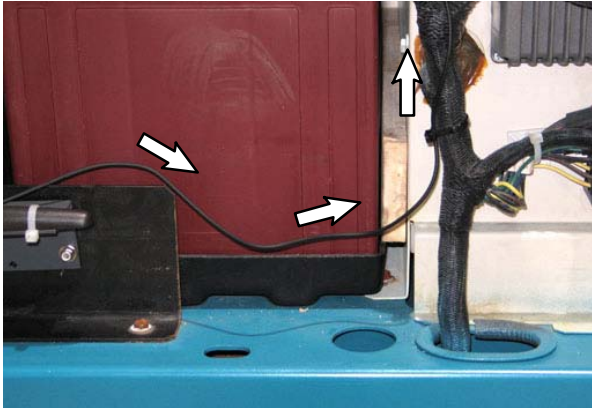


FIG. 12



FIG. 13

22. Continue routing the antenna (6) wire along the back of the battery compartment to the other side of the battery compartment. Use cable tie mounts (17) / cable ties (18) to secure the antenna wire to the back of the battery compartment. (Fig. 14 / Fig. 15)

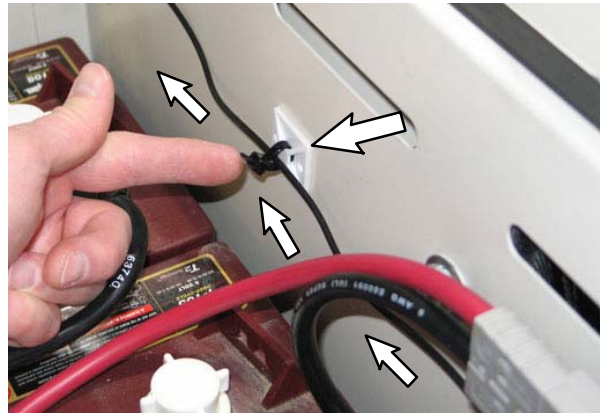


FIG. 14

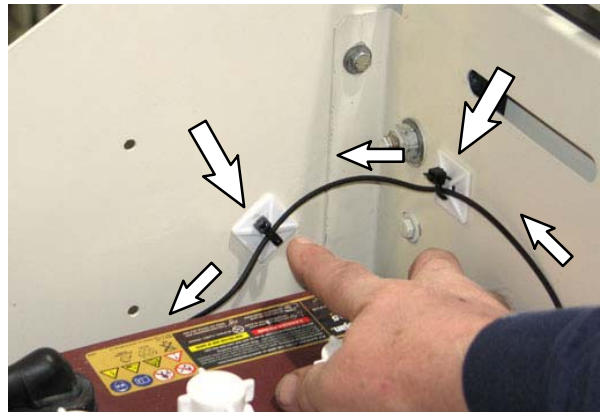


FIG. 15

23. Route the antenna (6) wire through the grommet in the hole below the telemetry control box (1). Use cable tie mounts (17) / cable ties (18) to secure the antenna wire away from the belt. (Fig. 16)

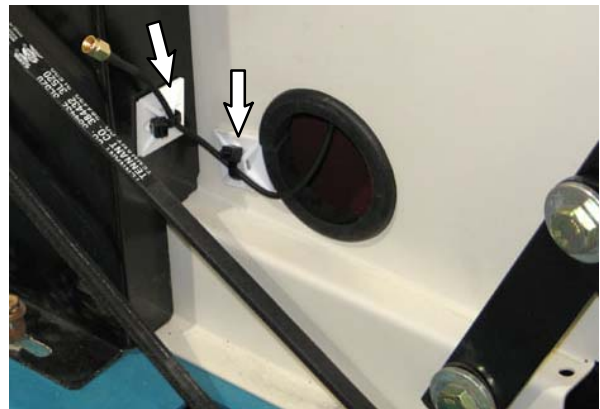


FIG. 16

24. Connect the antenna (6) wire to the telemetry control box (1). (Fig. 17)

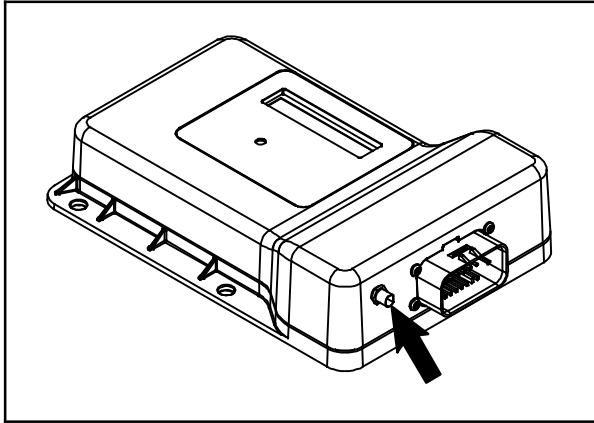


FIG. 17

25. Use a cable tie mount (17) and cable tie (18) to secure the antenna (6) wire to the frame of the machine. (Fig. 18)

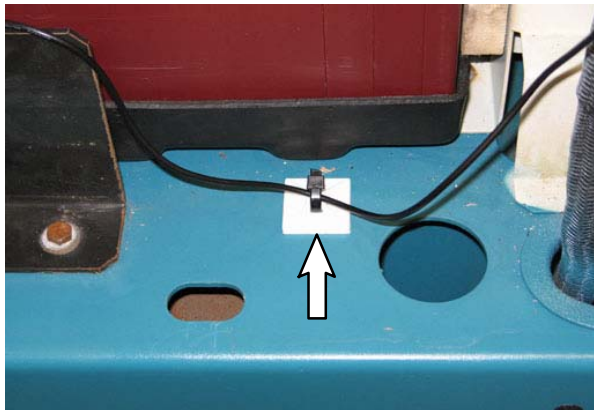


FIG. 18

26. Install the label (14) onto the seat support panel. (Fig. 18)
27. Install molding (16) inside battery compartment and insert the antenna (6) wire into the molding.
28. Connect the battery cable to the machine.
29. Reinstall the fuse into the telemetry harness (2).
30. Reinstall the left shroud and right shroud onto the machine.
31. Start and test machine.

- 32. North America Customer Locations:** Activate the IRIS (telemetry module): Call Technical Support (between hours of 7:00 am and 5:00 pm CST) for assistance to activate the module. The IRIS telemetry system must be activated to complete this install. Have machine serial number and IRIS module SIM number ready when calling for activation.

- 33. Australia Customer Locations:** Activate the IRIS (telemetry module): Call CCC (between hours of 8:00 am and 5:00 pm AEST) and ask to be routed to the IRIS expert for assistance to activate the module. The IRIS telemetry system must be activated to complete this install. Have machine serial number and IRIS module SIM number ready when calling for activation.

NOTE: The IRIS (telemetry module) must be activated to complete this installation. The module will not function until it is activated. Call for assistance activating the module after all telemetry components have been installed.

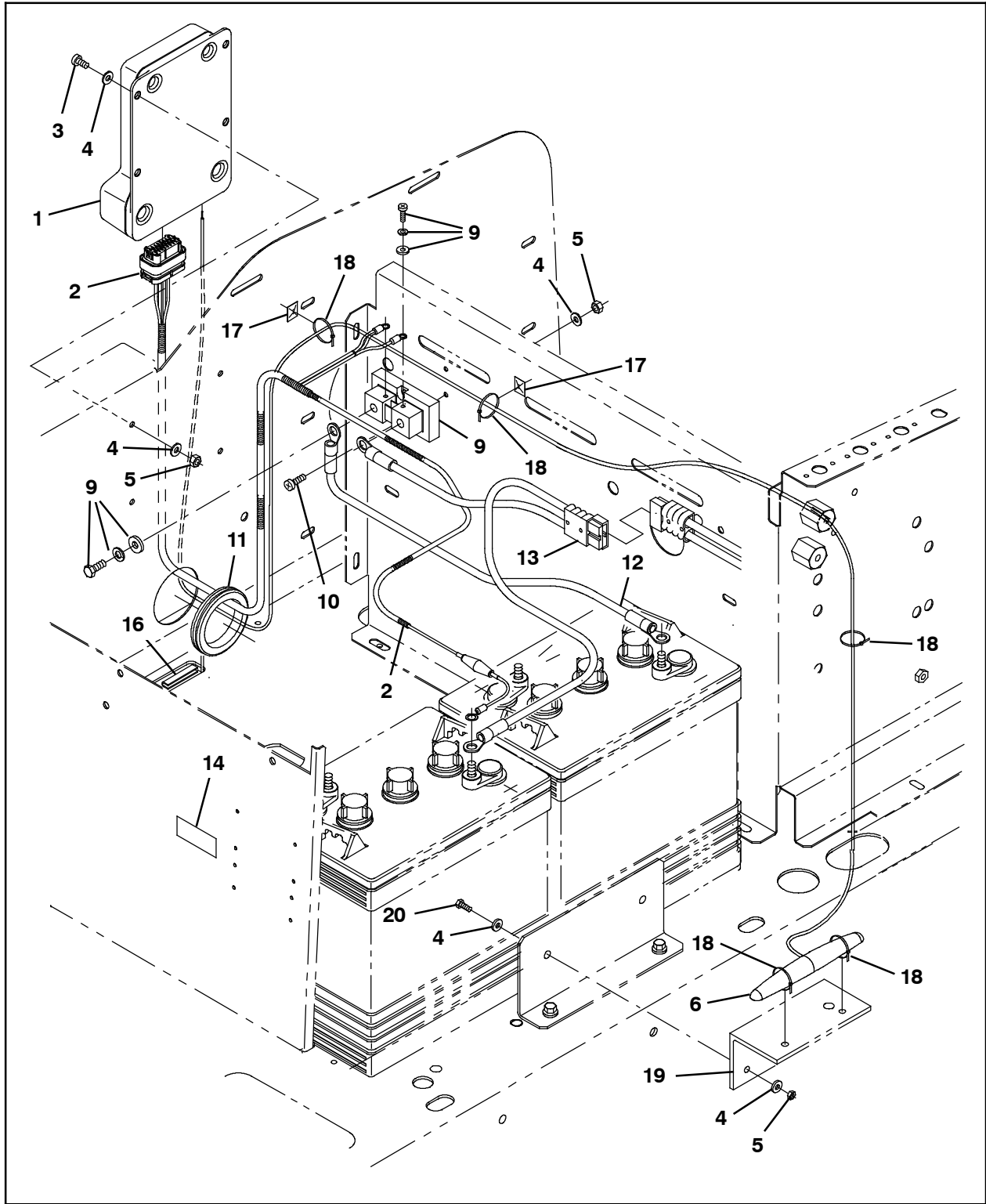


FIG. 19

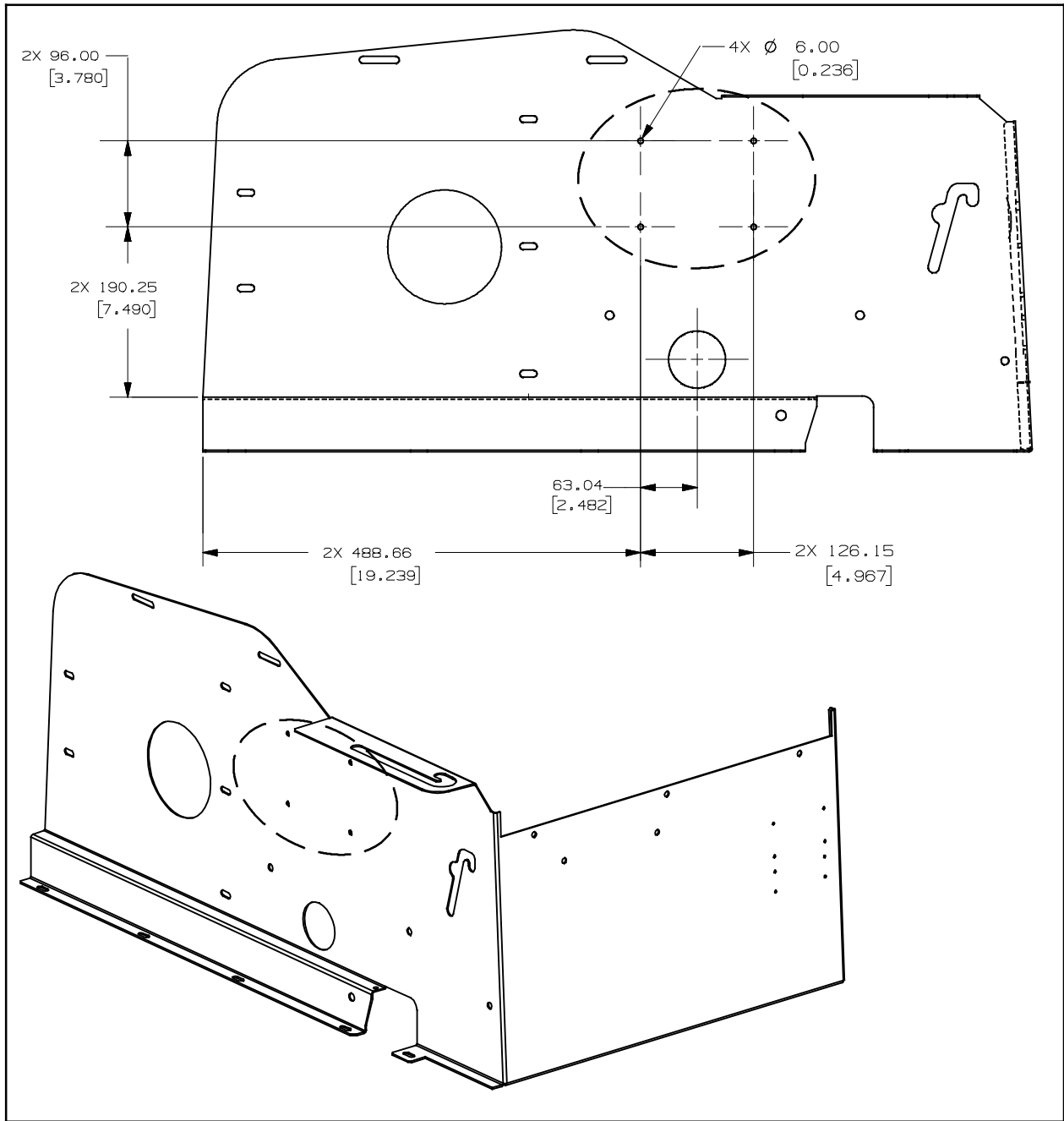


FIG. 20

**Bill Of Materials For Telemetry Kit, CI [6100E, USA] - 9013990 /
Telemetry Kit, CI [6100E, Intl] - 9013993**

Ref.	Tennant Part No.	Description	Qty.	
1	1069467	Control Box Assy, Telem[USA, 3G]	1	
1	1070541	Control Box Assy, TELEM [3G, Intl.]	1	
▽	2	1070506	Harness, Ele [Telemetry, 6100e]	1
▲	9009990	Fuse, 002A, 250vdc, Cartridge	1	
3	06933	Screw, Pan, Phl, M5 X 0.80 X 16, 4.8	4	
4	01683	Washer, Flat, 10, SS	12	
5	06549	Nut, Hex, Lock, M5 X 0.80, NI	6	
6	1070659	Antenna, Telem, 70 In [GPRS]	1	
7	140916	Clamp, Cable, Nyl, 0.62d, Nat	2	
8	360973	Screw, Pan, 12- 16 X 0.50, F/ Plstc	2	
9	1070384	Shunt, 050mv 250a	1	
10	06934	Screw, Pan, Phl, M5 X 0.80 X 20, 4.8	2	
11	10632- 19	Grommet, Rbr, 2.13id, F/2.5h, .12 Matl	1	
12	1070509	Cable, 6ga, Blk [6100e, Telemetry]	1	
13	1070508	Cable Assy, 6ga [6100e - Telemetry]	1	
14	1069580	Label, Opertnl, Telem [FCC/IC]	1	
15	49266	Tie, Cable, Nyl, 07.3l .19w 1.8 Max D	3	
16	C460140	Molding, Trim, PVC, .08- .11, Bulk	1	
17	55248	Cable Tie, Mount	5	
18	130773	Tie, Cable, Nyl, 11.0l .14w 3.0 Max D	10	
19	1070402	Angle, Mtg, Antenna, Telem	1	
20	24199	Screw, Hex, M5 X 0.80 X 16, SS	2	

TENNANT COMPANY
P. O. Box 1452
Minneapolis, MN 55440-1452